

## Plaster Coat Range of Products:

JK CEMENT  
**GypsoMaxX**  
Premium Gypsum Plaster



JK Cement GypsoMaxX is a premium gypsum plaster made up of the purest form of natural gypsum. It is a premium base coat produced as a result of calcination of the raw gypsum under a controlled production process in specialised manufacturing units.

JK Cement GypsoMaxX is suitable for application on internal surfaces including walls and ceilings.

JK CEMENT  
**PlastoMaxX**  
One Coat Gypsum Plaster



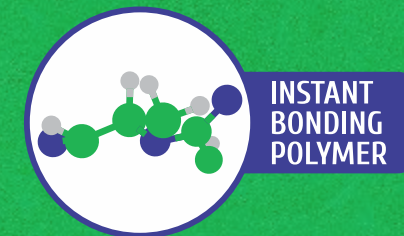
JK Cement PlastoMaxX is a gypsum based one coat plaster suitable for application on brick, block and concrete surfaces. Its vermiculite based  $\beta$ -hemihydrate formulation ensures working and setting characteristics. Its lightweight aggregates improve the plaster workability, coverage, application and post usage behaviour. It provides a smooth matte finish to the surface and makes it ready for painting.

JK CEMENT  
**PlastoMaxX<sup>90</sup>**  
One Coat Gypsum Plaster



JK Cement PlastoMaxX<sup>90</sup> is a gypsum based one coat plaster suitable for application on most internal backgrounds including bricks, blocks and concrete. It contains perlite as a lightweight aggregate which helps in providing a superior coverage of 80 - 90 m<sup>2</sup>/MT. It facilitates 2 times faster application than Sand Cement Plaster and 1.5 times faster than local Gypsum Plaster.

An environment friendly product, it saves potable water as no water curing is required while reducing the structural load on the building (50% lighter than conventional Sand Cement Plaster).



JK CEMENT  
**BondMaxX**  
Instant Plaster Bonding Agent



**JK Cement Ltd.**

Registered Office

Kamla Tower, Kanpur-208001, Uttar Pradesh

Telephone : 0512 2371478-81, Fax : 0512 2399854, Website : [www.jkcement.com](http://www.jkcement.com)

Customer Helpline No. : 1800 102 8868

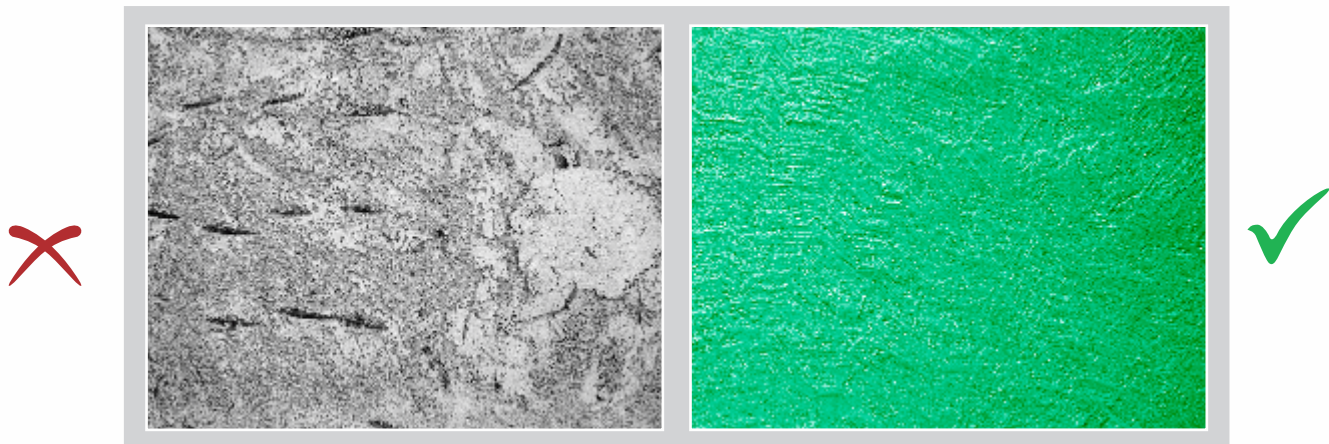


## Surface Preparation for RCC Structure:

The conventional method of surface preparation of smooth RCC was to hack the surface. Hacking made the surface rough hence providing mechanical grip to the plaster which is applied on top of smooth RCC. But, hacking was never considered a foolproof solution and it required a lot of time and effort.

Availability of manpower for hacking was a challenge. Even after arranging labour, achieving required roughness on the surface used to be a difficult task and there were other complications with respect to hacking as under:

1. Improvement in cement manufacturing has resulted in availability of various grades of cement with increased hardness resulting in compacting of cement which tends to make RCC smoother and reduces the grip of the plaster on the RCC.
2. Fly ash, micro silica usage in RMC reduces the porosity of concrete, in turn reducing the plaster grip.
3. Cycle-time reduction and increased RCC area in case of aluminium shuttering (MIVAN/MESCON) projects make hacking difficult.
4. Hacking generally results in micro-cracking of RCC, thus reducing the strength of the structure and making it susceptible to further damage.



Also, any mold, oil residue etc. on concrete surfaces has to be properly cleaned.

Even after hacking, there are still chances of de-bonding, because plastering is done after a few months of concreting/hacking. By that time, the hacked surface accumulates a lot of dust, dirt, grime which again reduces the grip of the plaster on RCC.

JK Cement BondMaxX offers complete freedom from all of these uncertainties.



## About JK Cement BondMaxX

JK Cement BondMaxX is formulated with Instant Bonding Polymer which makes it an excellent bonding agent suitable for RCC background and internal gypsum or plaster based wall lining. The unique mix of polymer, selected sand fillers and additives makes it coarse and improves its bonding properties.

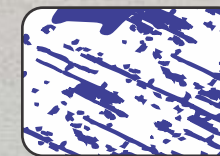
It also acts as a plaster bonding agent for pre-treatment of smooth background. Hacking or any other method for developing the surface is not required. After setting, JK Cement BondMaxX gives a coverage of 60 Sq ft. /Kg.



### Benefits



Strong Durable Bonding

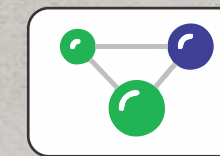


Suitable for RCC, Gypsum and Sand Cement Plaster



Easy Single Coat Application

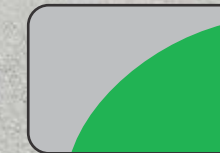
### Features



Dual bonding – chemical as well as mechanical grip



Can be applied using both brush and roller



Green colour for easy identification

## Product Application Process

### Background Preparation

1. Ensure that the surface is clean, dry and free from mold, oil or any other agents.
2. Any faults on the surface, particularly those which may lead to moisture penetration, must be rectified.
3. Just before the application of JK Cement BondMaxX, pre-wetting must be done with the help of a brush/roller.

### Mixing

1. Maximum 20% water can be added to dilute the mix, if required.
2. Mix the material properly with a clean stirrer to evenly distribute the solid particles present in the solution.

### Application

1. Use a good quality brush/roller.
2. Brush/roller should be cleaned with water, both before and immediately after use.
3. Allow the surface to dry thoroughly for up to 24 hours or depending upon the ambient conditions.